

# U.S.SAWS™

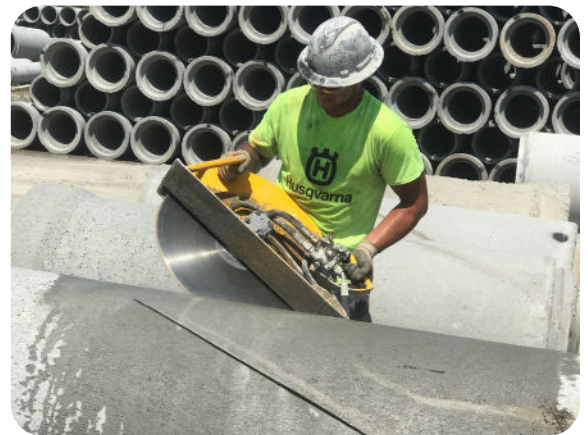
## Hydraulic Hand-Held Saw



U.S.SAWS Hydraulic Hand Saw is built with a fully welded aluminium frame and a large dual position front handle for easy control. The saw is available in 21" or 24" saw. The highly efficient hydraulic motor gives the saw a strong blade speed and torque delivery. Both saws come standard with a 6 foot hose whip including flush face quick disconnects.

### Features:

- Sturdy all welded aluminium powder coated frame
- Heavy Duty large dual position front handle for easy control
- Water shut-off valve and manifold block positioned to avoid any chance of damage
- Highly efficient hydraulic motor choice for both strong blade speed and torque delivery
- Hydraulic handsaw motors used vary based on power pack engine & pump sizes
- The most reliable, simple to use, and easy to refurbish hydraulic handsaw



Model	21" Hydraulic Hand-held Saw	24" Hydraulic Hand-held Saw
Max Depth of Cut	8"	10"
Max Blade Size	20"	24"
Engine	Hydraulic	Hydraulic
Horsepower	12 GPM/ 2000 PSI	12 GPM/ 2500 PSI
Weight	26 lbs	31 lbs
Part Number	US-HS210H	US-HS240H

